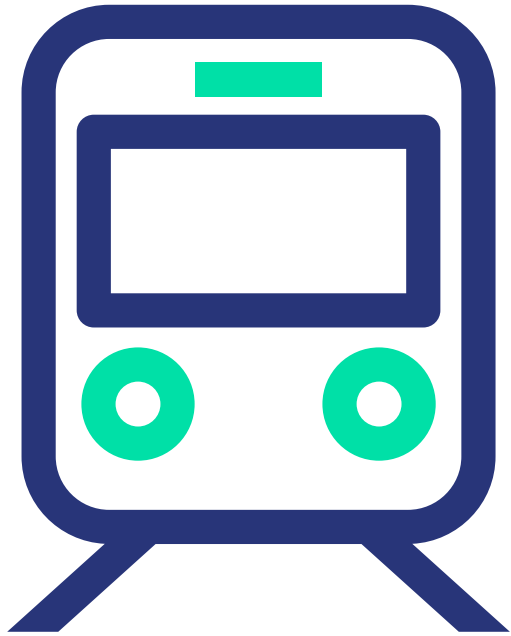


Lahti-Helsinki junalla



48 min

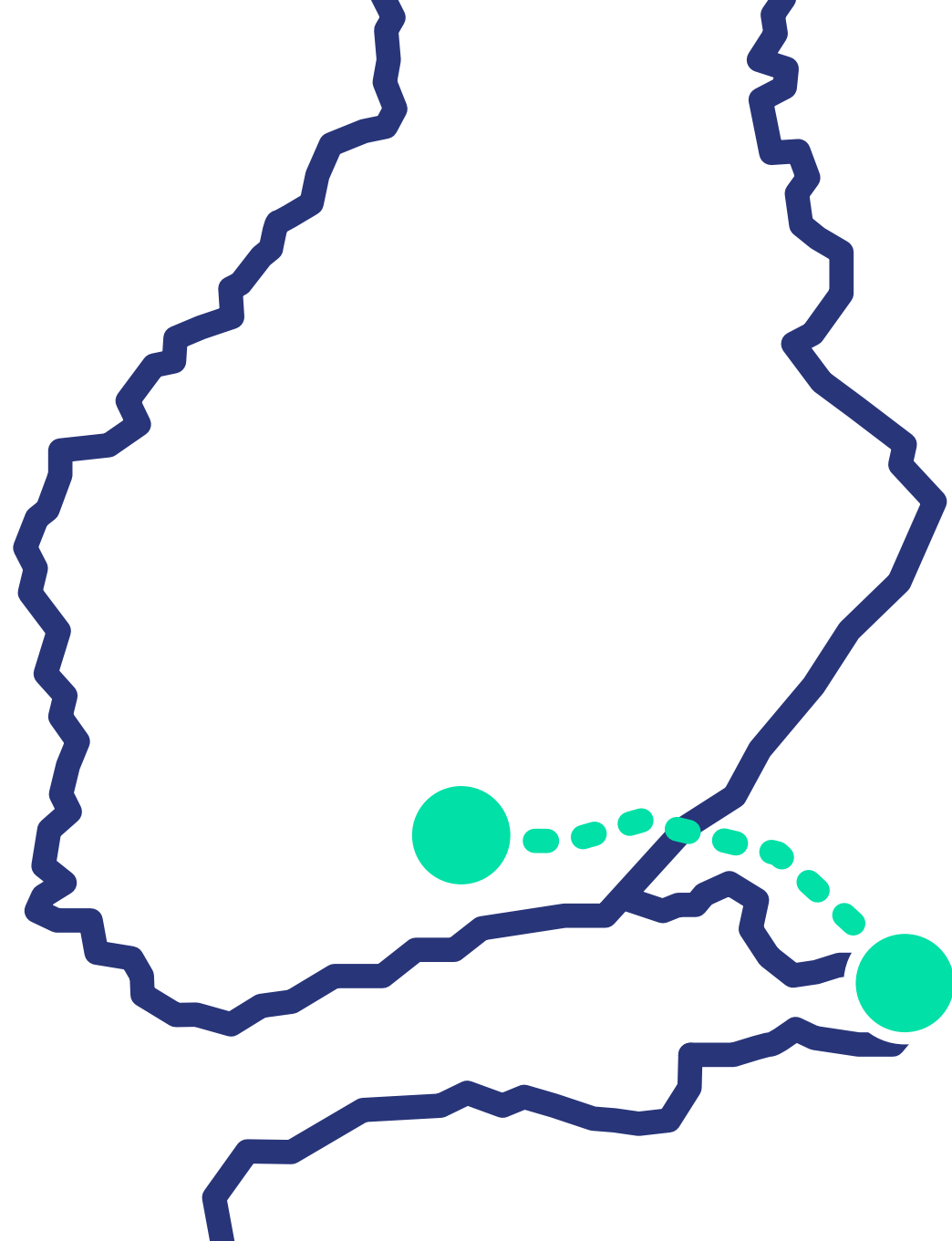


53 minuuttia

**Helsinki-Vantaan
lentoasemalle**

Lahdesta
Pietariin

2h 40min

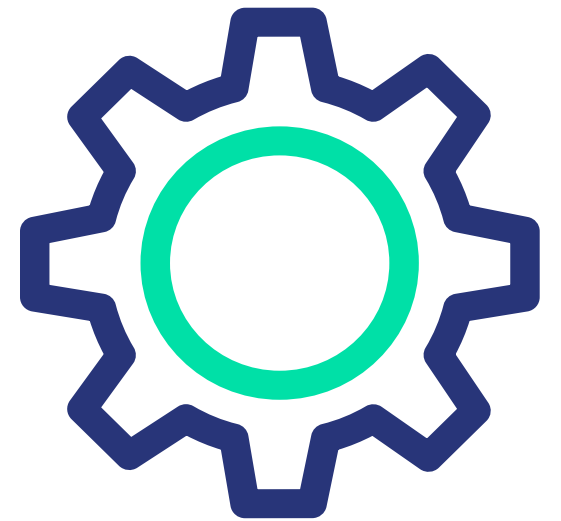


Lahden kaupunkiseudulla



8500

yritystä



80%

Suomen
markkinoista

150km

säteellä



200 000

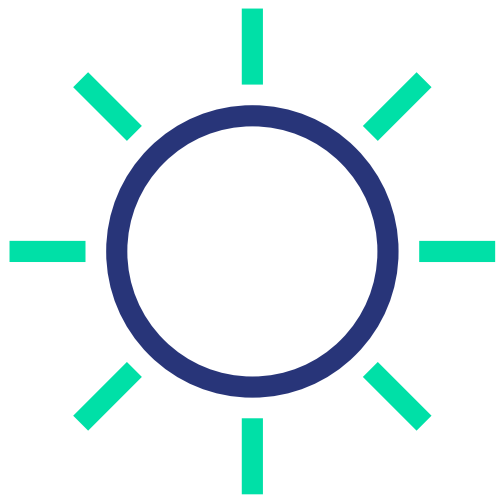
asukkaan
talousalue

5 suurin
kaupunki-
seutu



Asuntojen
keskihinta **1800** euroa
/m²





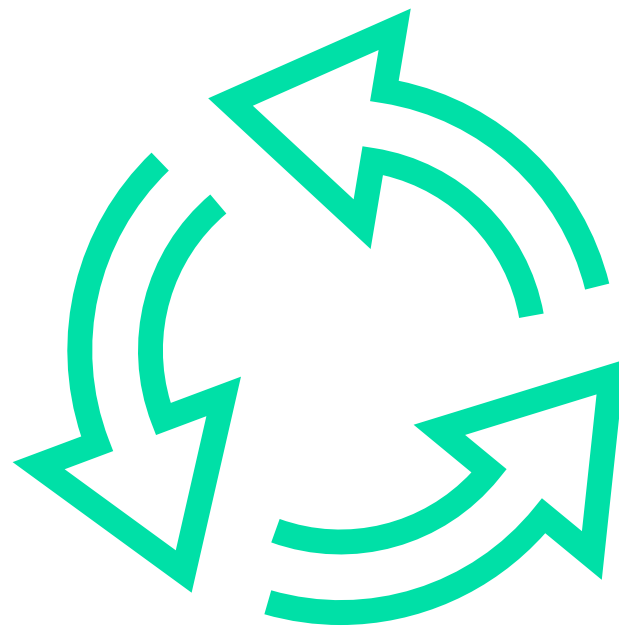
Omakotitalo
keskihinta



170 000 euroa

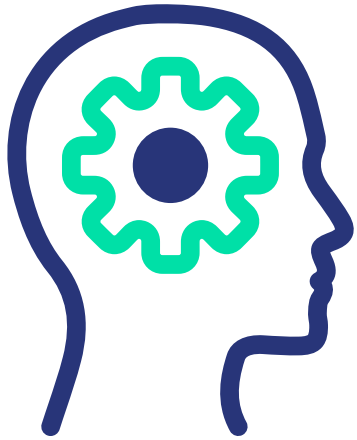


Suomen merkittävin kiertotalouden ekosysteemi

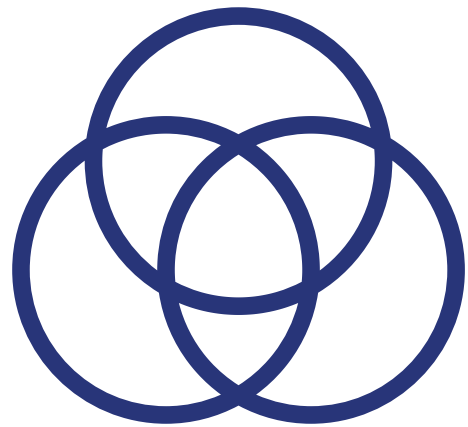
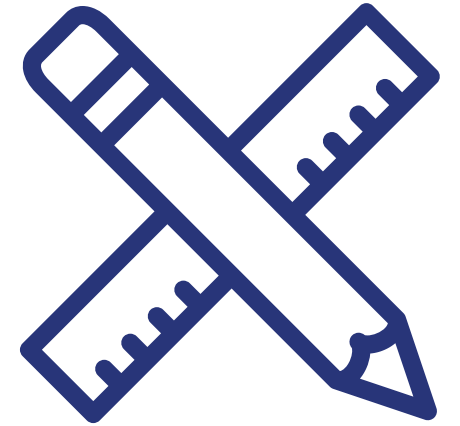


95%

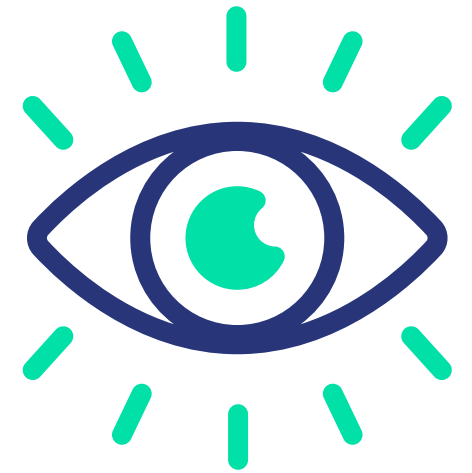
**hyödyntämistä
kotitalousjätteissä**



500+



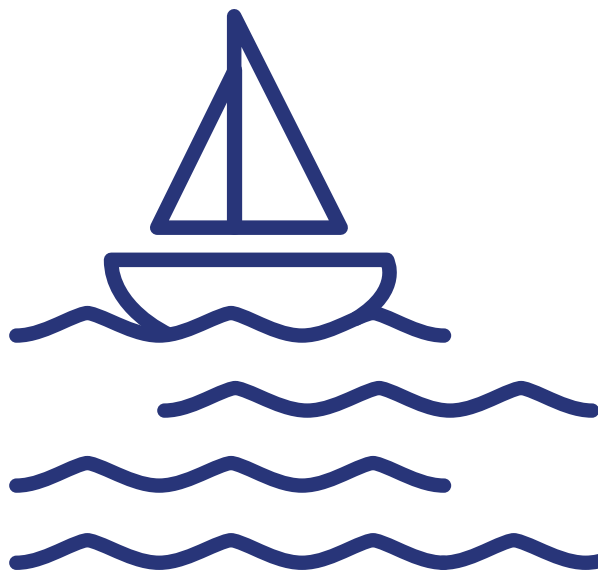
**muotoilijan
verkosto**



Satojen tapahtumien

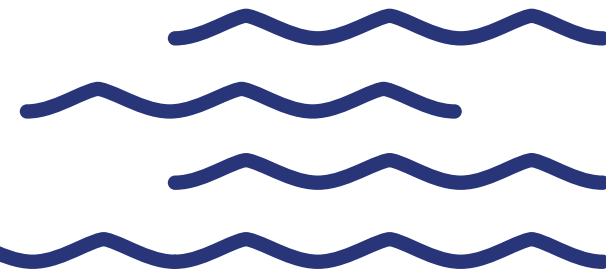
KAUPUNKISEUTU





10000

järveä



**Satoja kilometrejä
valaistuja latureittejä**

